

HOW TO INCREASE YIELD AND IMPROVE PROPERTY VALUES?



**WITH ADEQUATE
DRAINAGE TILES!**





Drainage tiles, get the most from your land

Drainage tiles have proven one of the most effective ways to improve your land. The benefits are many:

- the soil dries much quicker;
- better soil aeration;
- stronger microbial life;
- improved soil structure.

Drainage also has a positive effect on operations and crop yield. It allows:

- to get access to your fields earlier in spring or after a rainfall;
- to sow in a warmer soil because it warms up faster;
- crops have better root development;
- to harvest on a more stable land which will be less prone to soil compaction;
- **finally, to increase productivity and yields.**



Tile your land, yourself!

«I have a tractor , a laser/GPS system and an excavator . I lack only a tile plow.»

«I have just paid \$ 200,000 to tile my land, a tile plow would have been paid.»

«Why look to others... »

«I could tile when I'm ready.»

If this is the kind of thoughts you have, then you are ready to make the jump to tiling your own land, you will optimize the use of your equipment and you will save a great deal on costs.

Whether for complete tile job or only for corrections, our Tile Plow and Tile Stringer Caddy will contribute to the realization of your projects.

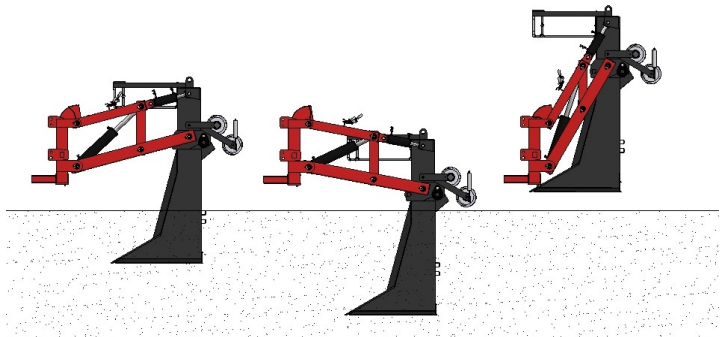
The LaSole Tile Plow:



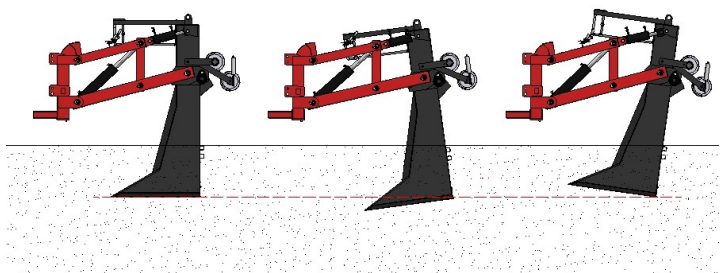
- 1 Draw-bar attachment
- 2 3-point hitch attachments
- 3 Eyelets for attaching a 2nd tractor
- 4 Laser/GPS & grade control supports
- 5 Grade, depth and hydraulic pressure indicators

The Tile plow is controlled using two systems

A first hydraulic system consists of 4 bars supporting central cylinder allows raising and lowering the boot without changing the grade (level). The tractor's 3-point hitch remains idle. The image shows that the boot remains level, regardless of height.

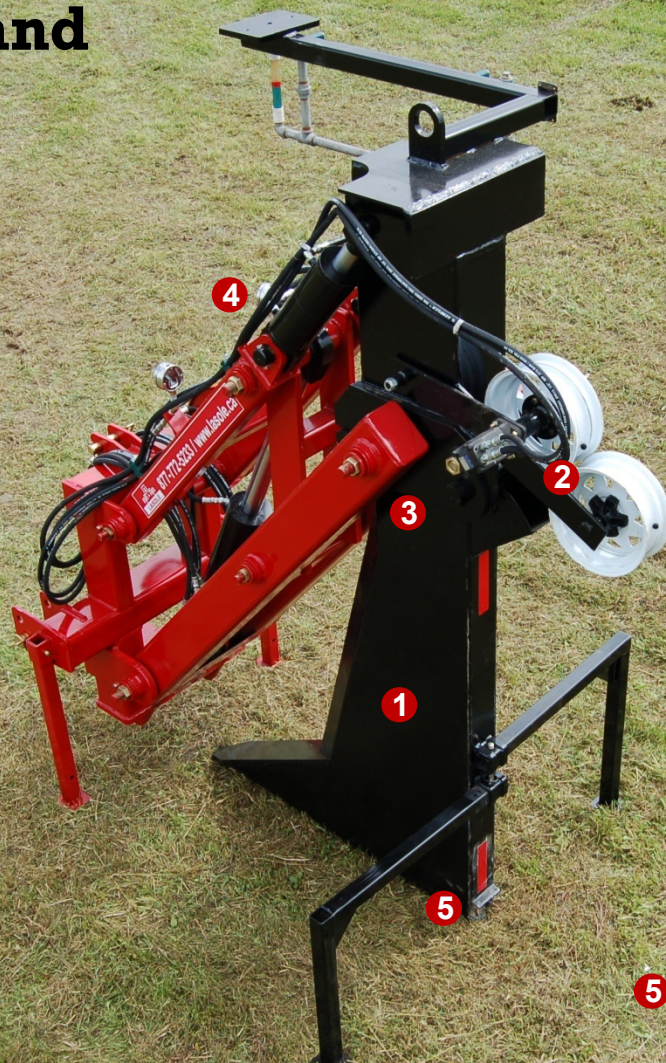


A second hydraulic system composed of two cylinders at the top, allows you to change the grade (level) of the boot. The red dotted line illustrates that the boot outlet does not change height, avoiding tile crushing when changing grade.



Some laser and GPS systems are able to control simultaneously both systems (height and grade). Our Tile Plow is one of the only compatible with these laser/GPS systems.

precision and robustness



- 1 Interchangeable boot
- 2 Power feeder (optional)
- 3 Quick attach for the boot
- 4 Hydraulic protection valve
- 5 Tile outlet with protective valve

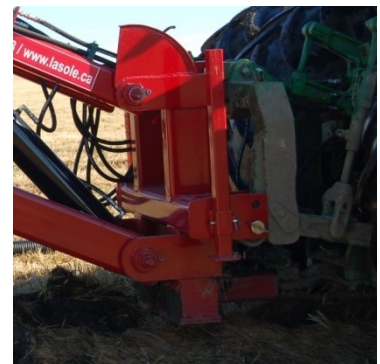
Interchangeable boot

We make a boot for each tile size: 4, 6 and 8" . Each boot is designed as narrow as possible requiring a minimum of power and traction. The trapezoidal design provides optimum support and a perfect placement of the tile. Boot changes have a quick attach system and requires only a few minutes.



Draw-bar AND 3-point hitch attachments

Our Tile Plow is carried on the 3-point hitch, but despite this, remains inactive. This configuration allows more traction to the tractor which is very handy. Also, setting the tile plow to the drawbar can lighten the load on the top link in addition to providing greater stability for the tile plow itself.



The LaSole Stringer caddy



- 1 Support wheels
- 2 Braking system
- 3 Utility basket (optional)
- 4 Spool lifting and pivot system

Carried on the tractor's 3-point hitch, the stringer caddy has great maneuverability. The support wheels located under the swivel base enforce the main axle. The ingenious braking system is incorporated into pivot/lifting tile spool system. The entire machine is built as we build our other products: simple, functional, robust and economical .



The LaSole Tile Plow and Stringer Caddy : technical data

Component	Characteristics
Complete Tile Plow	Weight : 6500 lb Minimum power : 200 HP Attachment Type : Draw-bar AND 3-point hitch Maximum working depth : 72" Clearance for the road: 16"
Cylinder controlling the pitch	Diameter: 6" Size of the attachment axes: 3" Ends: ball and socket joints Maximum thrust: 85,000 lb
2 cylinders controlling the grade	Diameter: 5" Size of the attachment axes: 2½" Ends: ball and socket joints Combined maximum thrust : 118,000 lb Protection : adjusted safety valve according to the tractor weight
Attachments	3-point hitch: cat.3 + cat.4N Drawbar: adjustable for any type of tractor <i>Note: the 3-point tractor system only serves to fix the tile plow to the tractor, it is inactive (height is locked in) when working with the Tile Plow.</i>
Boots	Weight of the 4" boot : 1100 lb Weight of the 6" boot : 1200 lb Quick attach system with 3" attachment axes Power tile feeder (optional) Tile outlet with protective valve Support brackets with integrated steps
Gauges	Depth: graduated gauge Grade: steel level filled with coolant Hydraulic pressure : 4" oversized dials
Stringer Caddy	Weight (empty): 1800 lb Lifting Capacity: 3500 lb at 48" from the swivel base Brake incorporated in the lift system



La Sole Inc : who are we?

We are a family business established in 1994. It is with pride that we work in the design, manufacture and sale of agricultural equipment.

Our initial product, the Double Blade, has revolutionized the way to level and prepare the soil. Since then we have created a range of products including Double Blade and Super Blade, two subsoilers models with the MFC and the Max Subsoiler and recently the Tile Plow and the Tile Stringer Caddy.

Our goal is to enable you to get better yields and profits by offering innovative and quality machinery for working your soil.

Dealing directly with the manufacturer ensures you get the best advice for your purchases and use of your equipment. Moreover, we can make changes to meet your specific needs.

**Contact us, it will be a pleasure to answer
any questions you may have.**



Experience and innovation at your service!

LaSole Inc. • 290 1st Ave, Ste-Helene (Quebec) Canada J0H 1M0
Toll free 877.772.5233 • T 450.791.4007 • F 450.791.2384
Email info@lasole.ca • Web site www.lasole.ca

